

Mike
Dobson



8 Avon Drive

Garforth, Leeds, LS25 1JP

£270,000

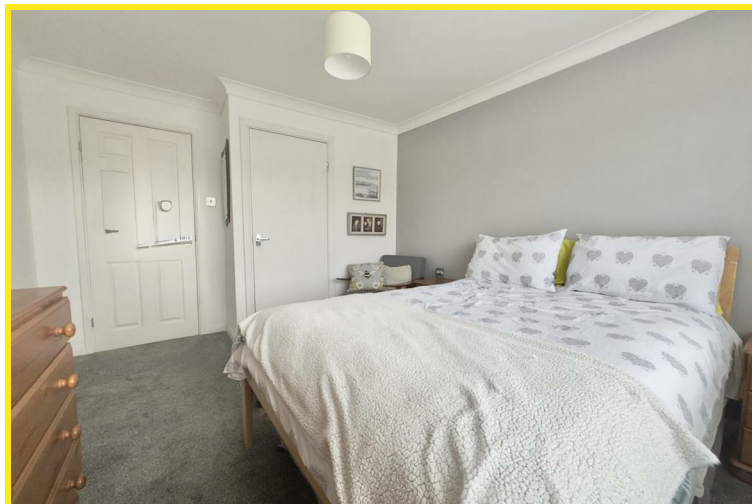
8 Avon Drive

Nestled in the highly sought-after location of Avon Drive, Garforth, Leeds, this charming two-bedroom semi-detached bungalow presents an excellent opportunity for those seeking a comfortable and convenient home. The property boasts a welcoming reception room, featuring a delightful fireplace that adds a touch of warmth and character to the living space. The lounge is further enhanced by patio doors that open into the attractive rear garden, allowing for a seamless flow between indoor and outdoor living.

The fitted kitchen is equipped with a new built-in oven and hob, complemented by an efficient extractor. The bungalow also includes a well-appointed three-piece white bathroom suite, ensuring practicality and style.

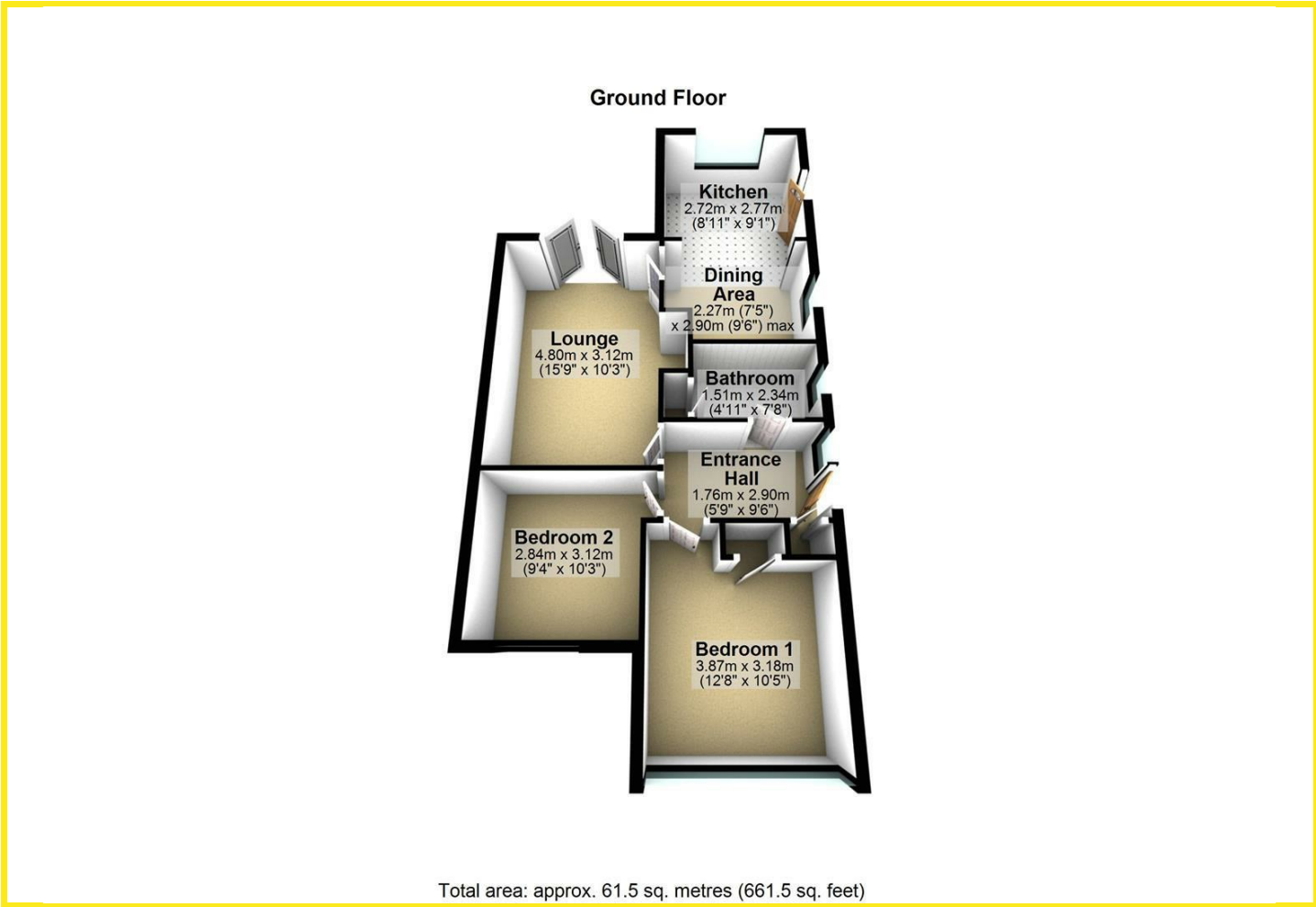
Outside, the property features a driveway providing off-street parking, a valuable asset in this desirable area. The rear garden is a true highlight, showcasing a newly laid patio area, ideal for relaxing in the sun, along with raised planters that offer a touch of greenery and charm.

Additionally, the detached garage, complete with lights and power, provides ample storage or workshop space, catering to various needs. With Hive-controlled central heating, comfort is assured throughout the seasons. This property is offered chain-free, making it an attractive option for prospective buyers looking to move in without delay. This bungalow is a perfect blend of comfort, convenience, and charm, making it an ideal choice for a variety of buyers.





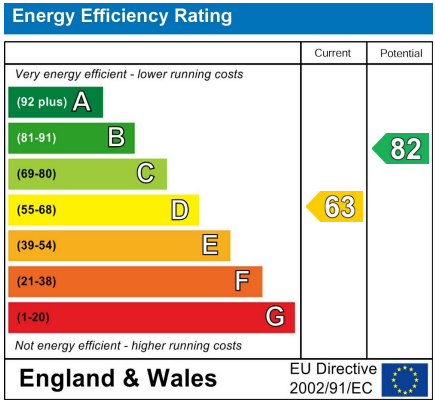
Floor Plan



Area Map



Energy Efficiency Graph



Directions

From our Garforth office on Main Street turn left. Continue on Main Street and then turn left again on to Church Lane. Proceed along turning right on to Grange Avenue, bear left onto Derwent Avenue, first right onto Springmead Drive, then first right onto Avon Drive, where the property can be found on the right hand side as indicated by the agents board.